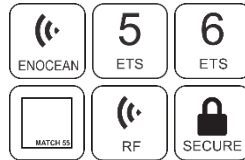
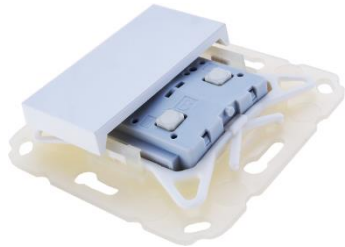


Data sheet

KNX RF / ENO Push Button 440 secure

Battery powered wireless push button for KNX RF or EnOcean with KNX Data Security and EnOcean Security For MATCH 55 series



(Art. # 5374 Insert with mounting set and single rocker)
(Art. # 5326 Insert with mounting set and double rocker)

Application area

The KNX RF / ENO Push Button 440 *secure* is a wireless push button for KNX RF or for EnOcean. The device is available with one or two rockers.

The device is part of the MATCH 55 push button series. With the supplied installation kit, the push button fits mechanically to numerous switch ranges available on the market with internal dimensions of 55 mm. The soft and quiet push button operation allows the installation in bedrooms and living rooms.

In the delivery state, the device sends EnOcean telegrams. Configuration for KNX RF is done with the ETS® via radio frequency or directly via the integrated USB interface. This interface can also be used to program other KNX devices via radio frequency. The push button is powered by a standard battery.

The application offers extensive functions for switching, dimming, shutter, valuator as well as scene and color control. The flexible operating concept also allows different functions on one button, depending on the setting. The device supports KNX Data Security and EnOcean Security.

Technical Specification

Electrical safety



- Protection (acc. EN 60529): IP20

CE marking according to

- Low voltage directive 2014 / 35 / EU
- EMC directive 2014 / 30 / EU
- Radio equipment directive 2014 / 53 / EU
- RoHS directive 2011 / 65 / EU (RoHS2)
- EN 63044-3: 2018, EN 50491-5-1: 2010
EN 50491-5-2: 2010, EN 50491-5-3: 2010
- EN 61000-6-2: 2019
EN 61000-6-3: 2007 + A1: 2011
- EN 63000: 2018
- EN 300220-2: V3.2.1

Environmental requirements

- Ambient temp. operating: - 5 ... + 45 °C
- Ambient temp. non-op.: - 25 ... + 70 °C
- Rel. humidity (non-condensing): 5 ... 93 %

Mechanical data

- Housing: plastic
- Dimensions wall mounting plate: 71 x 71 mm, for flush box 68 mm
- Rockers for standard frames with internal dimensions 55 x 55 mm
- Installation depth: none
- Weight: approx. 15 g

Controls and indicators

- 4 buttons
- 2 LEDs (green) for display sending
- KNX programming button with LED (red)

KNX

- Medium RF
- Interface Protokoll: HID/cEMI
- Max. APDU length: 55

Power supply

- Battery CR 2032

Connectors

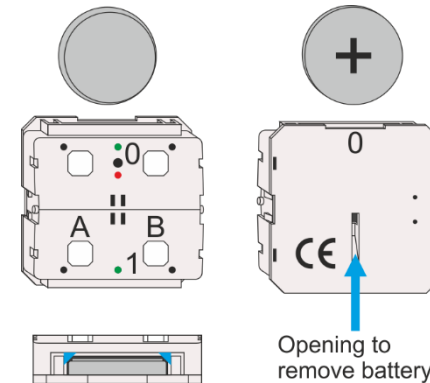
- Connector for USB Micro type B
- Integrated antenna

RF Interface

- KNX RF, ISM Band 868,3 MHz, FSK
Output power: 12 dBm
- EnOcean, ISM Band 868,3 MHz, ASK
Output power: 3 dBm
EnOcean Equipment Profile EEP: F6-02-01/-03

Installation Instructions

- The device may be used for permanent interior installations in dry locations.
- Pay attention to the correct polarity when inserting the battery.

**WARNING**

- The device must be mounted and commissioned by an authorized electrician.
- The prevailing safety rules must be heeded.
- The device must not be opened.
- For planning and construction of electric installations, the relevant guidelines, regulations and standards of the respective country are to be considered.



WEINZIERN ENGINEERING GmbH
Achatz 3-4
84508 Burgkirchen an der Alz
GERMANY

Tel.: +49 8677 / 916 36 – 0
E-Mail: info@weinzierl.de
Web: www.weinzierl.de

ETS6 Database
www.weinzierl.de/en/products/440/ets6
Manual
www.weinzierl.de/en/products/440/manual
CE Declaration
www.weinzierl.de/en/products/440/ce-declaration